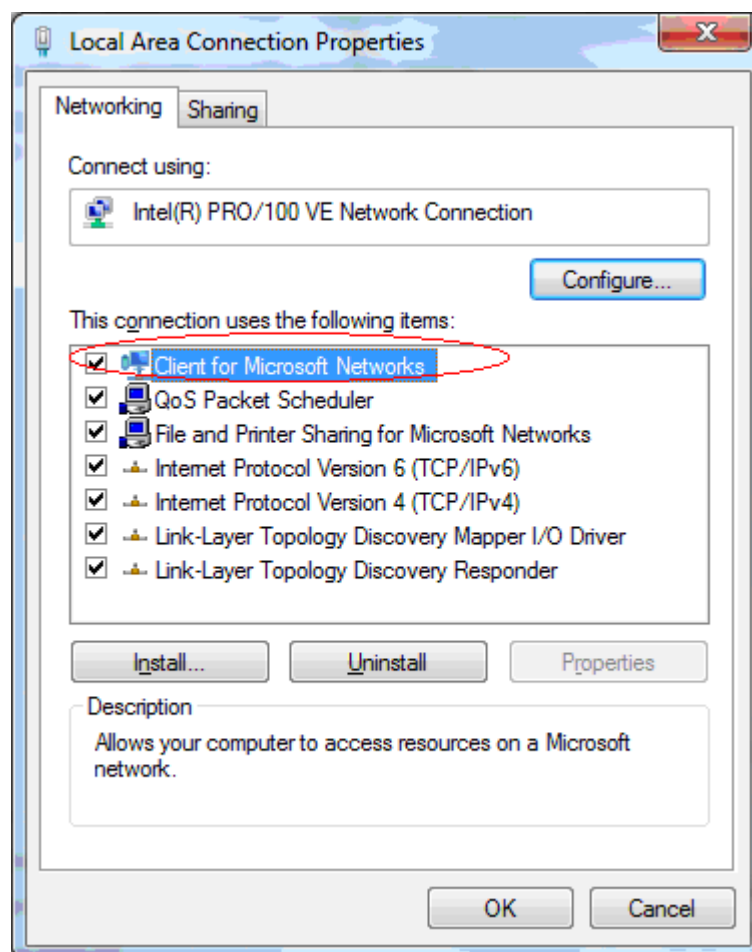


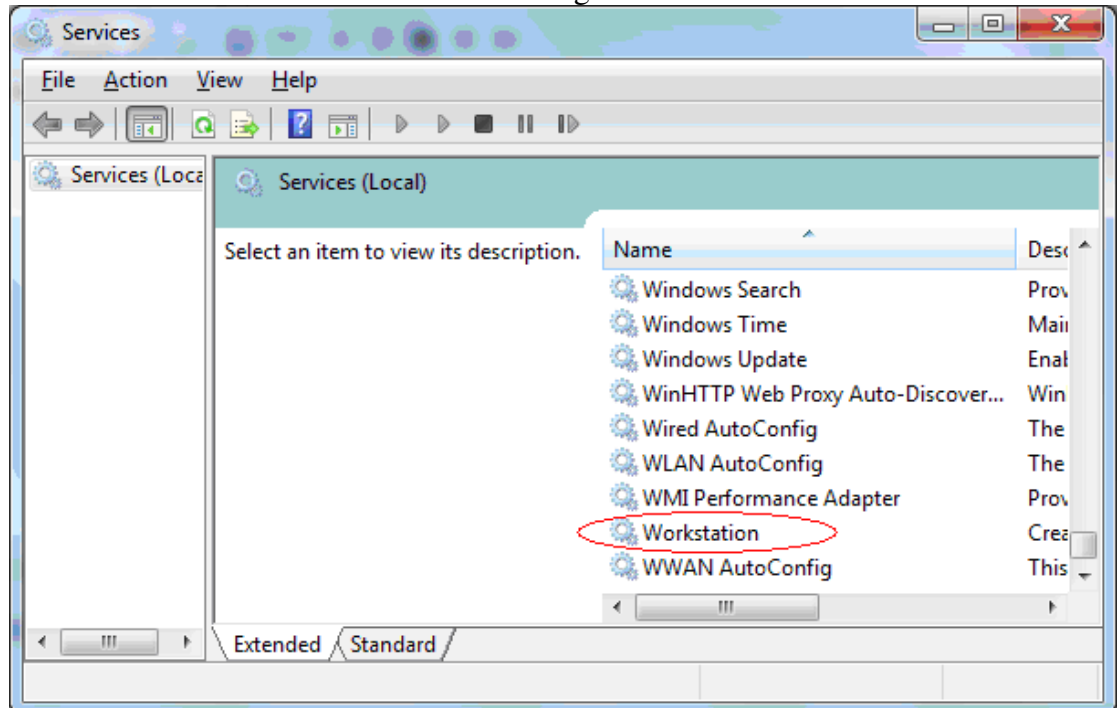
Notes For Running AeroDrive Super One Click Manager on Microsoft Windows 7/Vista V1.0 (2010-Dec-1)



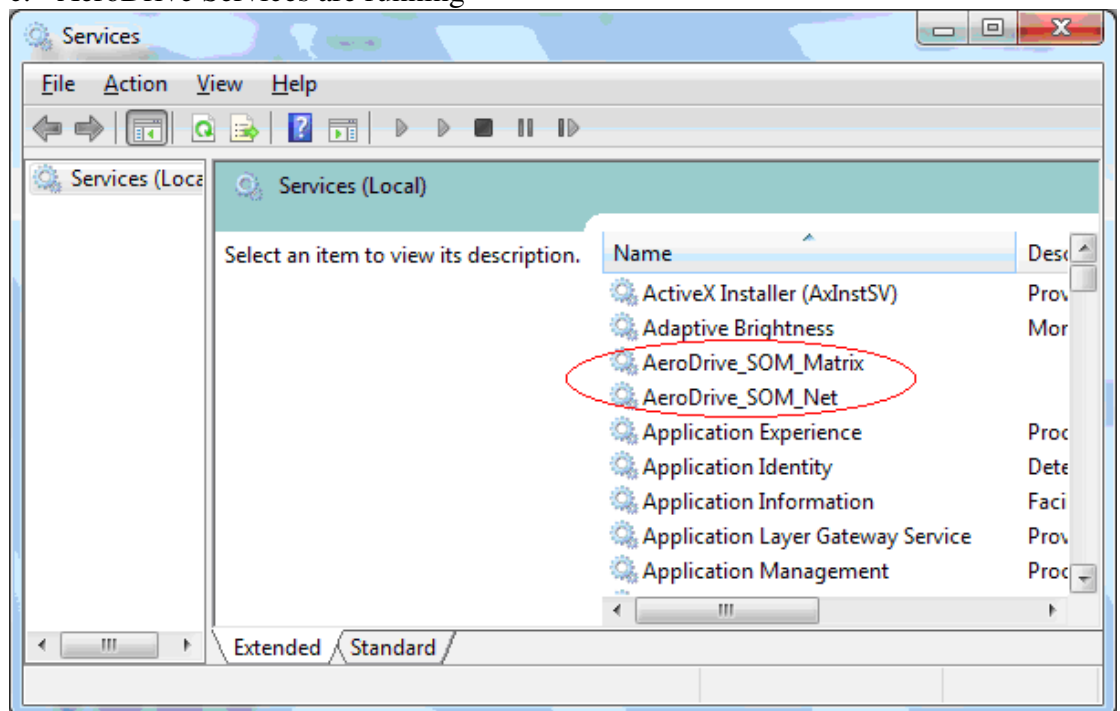
1. Please use the latest version v.68 or above.
2. Please **reboot** after installation.
3. Try disabling windows firewall / Anti-virus protection and try again.
4. Making sure
 - a. Windows for Microsoft Network is properly bound to the Network card



b. Microsoft Workstation Service is running



c. AeroDrive Services are running



5. For further support, please direct your question to support@aerodrive.com or call us at Tel: 2748 6611.

*** END ***